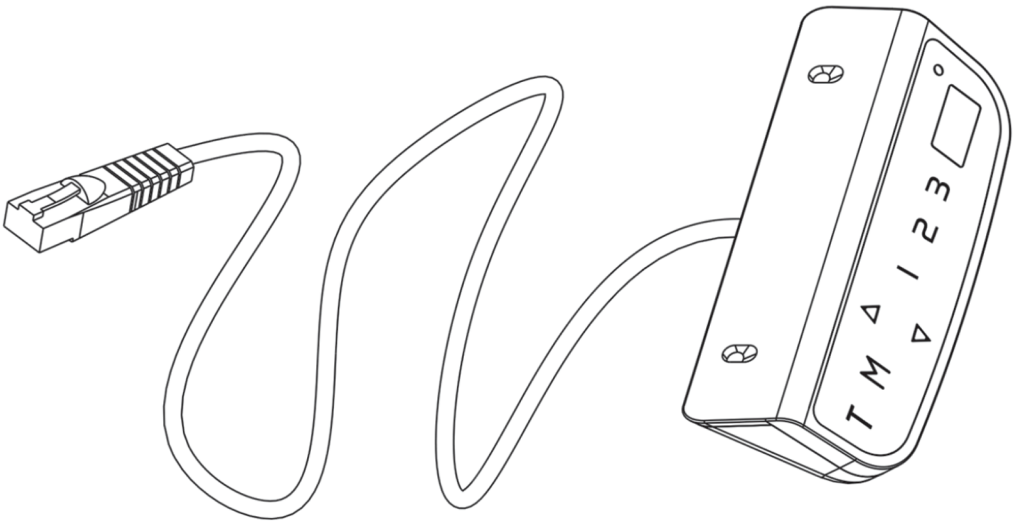




UVI Digital Control Panel

Assembly Guide




You can find assembly guides in other languages at:
[UVI.gg/AG](https://uvi.gg/AG) or via the QR code!




1


UVI Digital Control Panel

EN  Read the entire instruction manual before you start installation and assembly. If you have any questions regarding any of the instructions or warnings, please contact your local distributor for assistance.


- ⚠ CAUTION:** Use with products heavier than the rated weights indicated may result in instability causing possible injury.
- Please closely follow the assembly instructions. Improper installation may result in damage or serious personal injury.
 - Safety gear and proper tools must be used. This product should only be installed by professionals.
 - Make sure that the supporting surface will safely support the combined weight of the equipment and all attached hardware and components.
 - Use the mounting screws provided and **DO NOT OVER TIGHTEN** mounting screws.
 - This product containing small items that could be a choking hazard if swallowed. Keep these items away from children.
 - This product is intended for indoor use only. Using this product outdoors could lead to product failure and personal injury.
- IMPORTANT:** Ensure that you have received all parts according to the component checklist prior to installation. If any parts are missing or faulty, contact your place of purchase for a replacement.
- MAINTENANCE:** Check that the product is secure and safe to use at regular intervals (at least every three months).

SLO  Pred sestavo in montažo preberite celotni vodič za sestavo. Če imate kakršnakoli vprašanja glede navodil ali pa opozoril, prosimo kontaktirajte vašega lokalnega distributerja za pomoč.


- ⚠ PREVIDNO:** Uporaba izdelka z večjimi težami kot pa so predpisane lahko povzroči nestabilnost in resne telesne poškodbe.
- Nosilci morajo biti pritrjeni kot je navedeno v navodilih za sestavo. Nepravilna montaža lahko povzroči škodo ali resno telesno poškodbo.
 - Uporabljen mora biti varnostna zaščita in pravilna orodja. Ta izdelek lahko namesti samo profesionalno oseboje.
 - Prepričajte se, da bo podporna površina prenesla vso težo opreme in vso povezano strojno opremo in druge komponente.
 - Uporabite nosilne vijake, ki so že v paketu in vijake **NE PRIVIJTE PREVEČ**.
 - Izdelek vsebuje majhne predmete, ki lahko predstavljajo nevarnost zadušitve. Držite te predmete stran od otrok.
 - Izdelek je namenjen samo notranji uporabi. Uporaba izdelka zunaj lahko privede do kvrčenja izdelka ali pa do telesne poškodbe.
- POMEMBNO:** Prepričajte se, da ste v paketu prejeli vse dele glede na kontrolni seznam predmetov. Če kakšni deli manjkajo ali pa so poškodovani, stopite v stik z vašim lokalnim distributerjem za zamenjavo.
- VZDRŽEVANJE:** Preverite varnost okvirja v rednih intervalih (vsaj vsake tri mesece).
- Slovenska navodila lahko najdete na spletni strani UVIDesk.com/AG.**

HR  Prije montaže pročitajte cjeloviti vodič za montažu. Ako imate bilo kakvih pitanja u vezi s uputama ili upozorenjima se za pomoć obratite lokalnom distributeru.

- ⚠ OPREZ:** Korištenje proizvoda većim od propisane težine može uzrokovati nestabilnost i ozbiljne ozljede.
- Nosaci moraju biti učvršćeni kako je naznačeno u uputama u putama za montažu. Nepravilna montaža može uzrokovati oštećenja ili ozbiljne ozljede.
 - Mora se koristiti sigurnosna zaštita i pravi alati. Ovaj proizvod smije instalirati samo profesionalno osoblje.
 - Osigurajte da će noseća površina nositi svu težinu opreme i sav hardver i ostale komponente.
 - Upotrijebite pričvršne vijake koji su već u pakiranju i vijake ne PRITEGNITE PREVEĆ.
 - Proizvod sadrži male predmete koji mogu predstavljati opasnost od gušenja. Držite te predmete dalje od djece.
 - Ovaj je proizvod namijenjen samo za internu upotrebu. Korištenje proizvoda izvana može dovesti do oštećenja proizvoda ili ozljede.
- VAŽNO:** Provjerite jesu li svi predmeti u pakiranju prema popisu predmeta. Ako neki dijelovi nedostaju ili su oštećeni, obratite se lokalnom distributeru za zamjenu.
- ODRŽAVANJE:** Provjerite sigurnost okvira u redovitim intervalima (najmanje svaka tri mjeseca).
- Hrvatske upute možete pronaći na web stranici UVIDesk.com/AG.**

DE  Bitte vor Beginn der Montage und Zusammenbau das ganze Handbuch durchlesen. Bitte sich mit dem Händler vor Ort bei Fragen zur Anleitung oder Warnungen in Verbindung setzen.

- ⚠ VORSICHT:** Bei Verwendung mit Produkten, die das zulässige Gewicht überschreiten, können Schaden oder möglicherweise Verletzungen die Folge sein.
- Halterungen sollen entsprechend den Montageanweisungen angebracht werden. Eine unsachgemäße Montage kann Schäden oder Verletzungen zur Folge haben.
 - Sicherheitsausrüstung und geeignete Werkzeuge verwenden. Die Montage des Produktes sollte nur von Fachleuten durchgeführt werden.
 - Die tragenden Oberflächen sollten das gesamte Gewicht von Geräten und allen zusätzlichen Bauteilen sicher aushalten können.
 - Nur die mitgelieferten Einbauschrauben verwenden und die Schrauben **NIGHT ZU FEST ANZIEHEN**.
 - Dieses Produkt enthält Kleinteile, die Erstickungsgefahr beim Verschlucken hervorrufen können. Diese Teile von Kindern fernhalten.
 - Dieses Produkt nur in Innenräumen verwenden. Verwendung des Produktes im Außenbereich kann zu Verletzungen und Schäden führen.
- WICHTIG:** Vor der Montage bitte alle erhaltenen Bauteile mit der Bauteileliste abgleichen. Bei beschädigten oder fehlenden Teilen den Händler vor Ort nach Ersatzteilen fragen.
- WARTUNG:** Die Haltemngsklammer regelmäßig auf Sicherheit und Stabilität prüfen (am besten alle drei Monate).

FR  Lisez entièrement le guide d'utilisateur avant de commencer l'installation et le montage. Si vous avez des questions concernant les instructions ou les avertissements, veuillez contacter votre distributeur local pour une assistance.

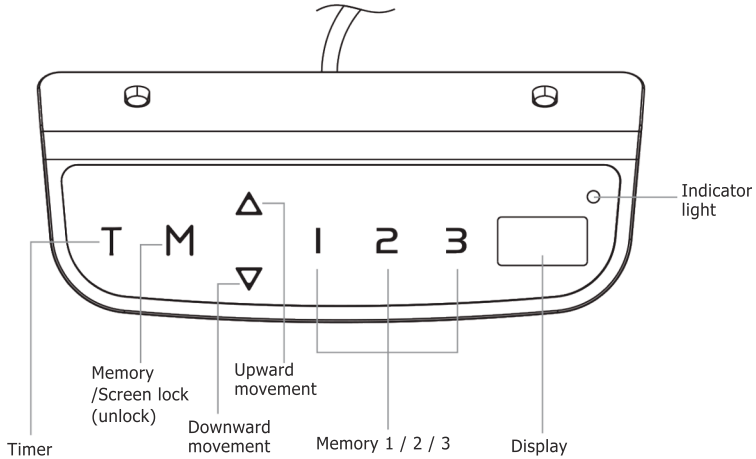
- ⚠ ATTENTION:** L'utilisation de produits plus lourds que les poids nominaux indiqués peut entraîner une instabilité causant des blessures potentielles.
- Les supports doivent être joints comme spécifié dans les instructions de montage. Une mauvaise installation peut entraîner des dommages ou de graves blessures aux personnes.
 - Un équipement de sécurité et les outils appropriés doivent être utilisés. Ce produit devrait être installé uniquement par des professionnels.
 - Assurez-vous que la surface de soutien supporte en sécurité le poids combiné de l'équipement et de tous les matériaux et composants associés.
 - Utilisez les vis de montage fournies et **NE SERREZ PAS TROP LES vis de montage**.
 - Ce produit contient de petites pièces qui peuvent causer un étouffement si elles sont avalées. Éloignez ces pièces des enfants.
 - Ce produit est prévu uniquement pour une utilisation à l'intérieur. L'utilisation de ce produit à l'extérieur peut entraîner une défaillance du produit ou des blessures aux personnes.

IMPORTANT: Avant l'installation, assurez-vous que vous avez reçu toutes les pièces selon la liste de vérification des composants. Si une pièce est manquante ou endommagée, téléphonez à votre distributeur local pour qu'il la remplace.

MAINTENANCE: A intervalles réguliers (au moins tous les trois mois) vérifiez que le support est d'utilisation sûre et fiable.

2

UVI Digital Control Panel



Operation Instruction:

Activate the System: Touch the screen. The "----" will appear on the display. Then, press and hold the "M" button for 3 seconds. The current height will display and you can start operating the system.

Height Adjustment: Press and hold the up button to lift the desk. Press and hold the down button to lower the desk.

Timer: The timer is designed to inform users to stand up after a set period of time. Press the "T" button to set the period of time. The display will flash "0.5 h" for 0.5 hour. Each press of the "T" button leads to a 0.5 hour increment. The maximal setting of time is 2 hours. When the display stops flashing, then the period of time is successfully set and the indicator light on the top right of panel will be on. When the set time is up, the buzzer will beep to remind the user to stand. The timer will turn off automatically after a long beep. To cancel the timing, press "T" button for 5 times until the display shows the current height and the indicator light is off.

Memory Setting: Adjust the desk to your desired position. Press the "M" button, then "S-" appears on the display. Press "1", "2" or "3". The memory is successfully set. You can store up to 3 heights by repeating the same process.

Protective Standby Mode: If there is no operation for 1 minute, the system will enter the protective standby mode. To turn off the standby mode, press and hold the "M" button for 3 seconds. You can also press and hold the "M" button for 3 seconds to activate the standby mode, when you don't need to operate the system.

Power-saving Mode: When no actions are made for over 10 minutes, the system will enter power-saving mode. Press any button to enter operation mode.

Measurement Switch (cm/inch): Press "T" for 8s. The buzzer will beep twice. The measurement is changed from centimeter to inch. If you want to switch the measurement back to centimeters, press the "T" button again for 8s.

Reset Mode: While the system is reconnected, press the down button until "RST" is displayed. Continue to press the button. The desk will move down and then raise a little bit. (Make sure you never release the button during the process.) After the movement stops, the system is successfully reset to the starting position.

Troubleshooting

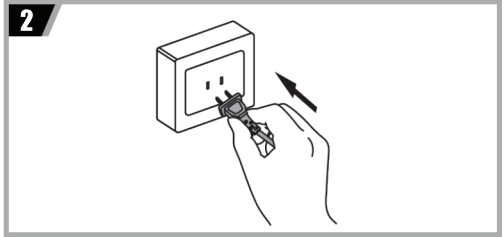
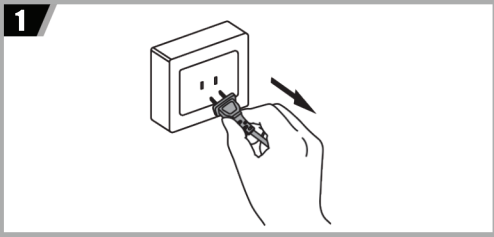
This repair guide intends to help you identify and solve the minor problems caused by unusual operation of the electric system of our sit-stand desk. The simple procedures in this manual are easy to follow and capable of solving most common problems, that happen in everyday use.

If ER1/ER2/HOT/ER3/ER4/ER5 appear on the control panel, this is normally nothing to worry about, and is usually an indication, that the system has experienced activity, that is above the rated specifications. Simply follow the steps below, as most errors can be solved by user. If the problems aren't solved, please contact your point of purchase to replace components.

1. ER1 Troubleshooting

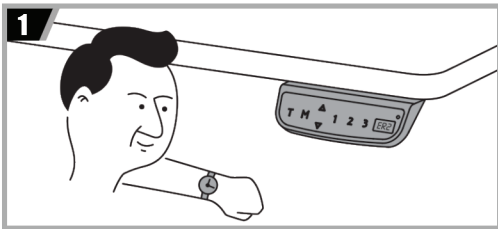
Step 1: Check if the desk is overloaded. If so, remove the items on the desktop and disconnect the power. If not, only disconnect the power.

Step 2: Wait for 10s, then reconnect the power cord.



2. ER2/HOT Troubleshooting

Step 1: The system has experienced above-normal temperature. Allow your desk to cool down and remain idle for approximately 20 minutes. Never turn off the power during this process.

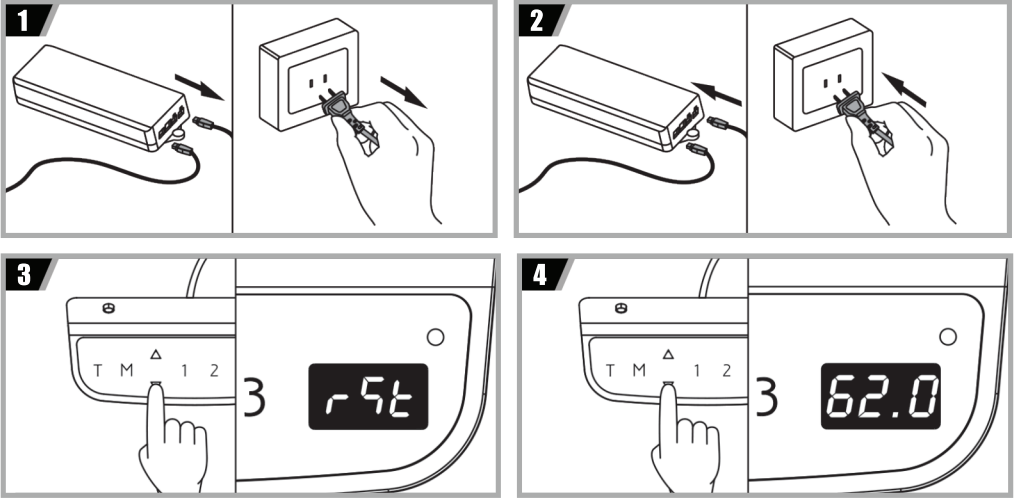


4

UVI Digital Control Panel

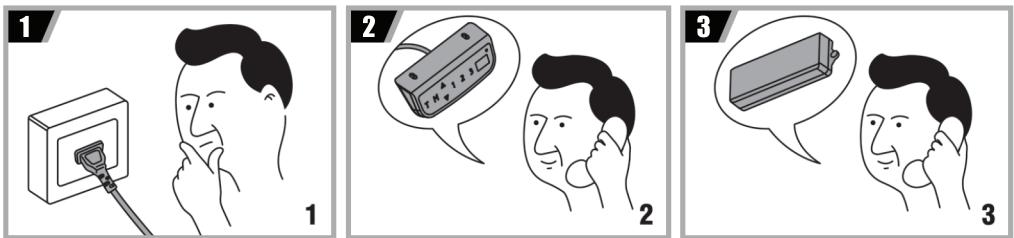
3. Overcurrent Protection

In addition, an over-current protection mode has been also programmed in this system. When the electricity is over the rated specification, the system will enter this mode. If the mode activates, the desk will lower approximately 30mm and stop with the height displayed. This is only an introduction of the function of the downward movement. No troubleshooting is required when this happens.



4. Control Panel Problems

If the control panel is not responding or you can not adjust the desk, please check if the desk is properly plugged into the power outlet. If it is, try to turn the power off and on again, to see if the issue is fixed. If the controller is still not responding, please contact the support.



5. ER3/ER4/ER5 Troubleshooting

Step 1: The system has experienced unusual electrical problems. First, disconnect the motor cords and power.

Step 2: Wait for 10s, then reconnect the cords.

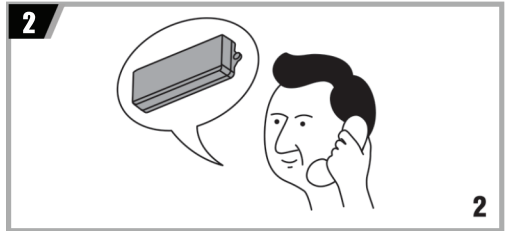
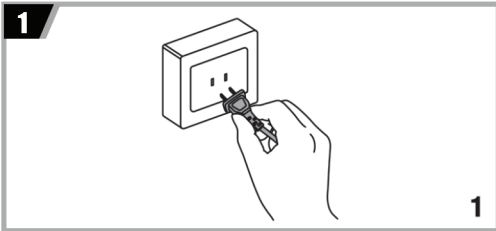
Step 3: Press and hold the down button until the image appears, and continue to press the button. The desk will move down and then raise a little bit. Make sure you never release the button during the process.

Step 4: Release the button after the movement stops.

6. Lifting Columns Can't Operate

If the desk, after confirming the control panel works properly, still doesn't work, please turn the power off and restart the system.

If it still doesn't work, please contact support for service or repair to your unit.



Error No.	Description	Solution	Error No.	Description	Solution
E02	Column of height difference	Reset the system	E16/E26	Motor failure	Reset the system
E04	Digital controller connection error	Check the connection then reconnect the power	E17	Desk moves in wrong direction	Replace the motor cord (M1)
E05	Collision avoidance system	Release the button	E18/E28	Weight overload	Remove the items on the desktop
E06	Electrical Problem	Replace the control box	E21	No connection	Check the connection (M2)
E08	Uneven desktop	Reset the system	E23	Motor wire broken	Check then replace the motor cord (M2)
E11	No connection	Check the connection (M1)	E24	Hall wire broken	Check then replace the motor cord (M2)
E12/E22	Abnormal current	Replace the control box	E25	Short circuit	Replace the motor (M2)
E13	Motor wire broken	Check then replace the motor cord (M1)	E27	Desk moves in wrong direction	Replace the motor cord (M2)
E14	Hall wire broken	Check then replace the motor cord (M1)	E42	Memory function failure	Replace the control box
E15	Short circuit	Replace the motor (M1)	E43	Sensor failure of collision avoidance system	Replace the control box

Note: Press “M” and “T” simultaneously for 5s, the buzzer beeps once and the “S-1” is displayed. You have entered the setting menu successfully. The setting process will exit automatically if no action is done for 10s.

You can cancel the unsaved settings by pressing “T”.

•Minimum & Maximum Height Settings

To set a minimum height limit

- 1.Press “M” and “T” simultaneously for 5s, the buzzer beeps once and the “S-1” is displayed.
- 2.Press “M” once, then press “UP”/“DOWN” to set your desired min. height.
- 3.Press “M” to save. “L-S” will be displayed if successfully saved, while “L-F” shows if failed.

Note: Default min. height is 62cm (24.4”), and the adjustable range is 62-118cm (24.4”~46.4”).

To set a maximum height limit

- 1.Press “M” and “T” simultaneously for 5s, the buzzer beeps once and the “S-1” is displayed.
- 2.Press “UP”/“DOWN” and switch to “S-2”
- 3.Press “M” once, then press “UP”/“DOWN” to set your desired max. height.
- 4.Press “M” to save. “H-S” will be displayed if successfully saved, while “H-F” shows failed.

Note: Default max. height is 128cm (50.4”), and the adjustable range is 72-128cm (28.3”~50.4”).

•Adjust the Anti-Collision Sensitivity (Current Sensor)

To set a upwards current sensitivity

- 1.Press “M” and “T” simultaneously for 5s, the buzzer beeps once and the “S-1” is displayed.
- 2.Press “UP”/“DOWN” and switch to “S-3”
- 3.Press “M” once, then press “UP”/“DOWN” to change the sensitivity level.
- 4.Press “M” to save. “S-S” will be displayed if successfully saved, while “S-F” shows failed.

Note: Default sensitivity is 4, and the adjustable range is 0-8. (0: off/8: maximum)

To set downwards sensitivity

- 1.Press “M” and “T” simultaneously for 5s, the buzzer beeps once and the “S-1” is displayed.
- 2.Press “UP”/“DOWN” and switch to “S-4”
- 3.Press “M” once, then press “UP”/“DOWN” to change the sensitivity level.
- 4.Press “M” to save. “S-S” will be displayed if successfully saved, while “S-F” shows failed.

Note: Default sensitivity is 4, and the adjustable range is 0-8. (0: off/8: maximum)

•Adjust the Anti-collision Sensitivity (Gyro Sensor)

- 1.Press “M” and “T” simultaneously for 5s, the buzzer beeps once and the “S-1” is displayed.
- 2.Press “UP”/“DOWN” and switch to “S-5”
- 3.Press “M” once, then press “UP”/“DOWN” to change the sensitivity level.
- 4.Press “M” to save. “S-S” will be displayed if successfully saved, while “S-F” shows failed.

Note: Default sensitivity is 4, and the adjustable range is 0-8. (0: off/8: maximum)

•Displays Height Currently (including Desktop Thickness)

- 1.Press “M” and “T” simultaneously for 5s, the buzzer beeps once and the “S-1” is displayed.
- 2.Press “UP”/“DOWN” and switch to “S-6”
- 3.Press “M” once, then press “UP”/“DOWN” to set your desired desktop thickness.
- 4.Press “M” to save. “T-S” will be displayed if successfully saved, while “T-F” shows failed.

•Screen Lock Setting

- 1.Press “M” and “T” simultaneously for 5s, the buzzer beeps once and the “S-1” is displayed.
- 2.Press “UP”/“DOWN” and switch to “S-7”
- 3.Press “M” once, then press “UP”/“DOWN” to change the screen lock setting. (0: off/1: on)
- 4.Press “M” to save. “A-S” will be displayed if successfully saved, while “A-F” shows failed.

•To Save Multiple Customized Settings at the Same Time

(eg: save the max. and min. limit height at one time) After adjusting the min. height limit, press “T” to get back and enter “S-2” to adjust the max. height limit. Once finished, press “M” to save both settings.

•To Reset the Customized Settings

Press “M”, “T” and “UP” simultaneously for 5s, until the buzzer beeps.